



CHARTER BUSINESS NEXT-GENERATION OPTICAL ETHERNET SERVICE OFFERS AFFORDABLE, FLEXIBLE BANDWIDTH TAILORED TO FIT TODAY'S BUSINESS NEEDS.

■ **THE ETHERNET ADVANTAGE**

Charter Business® Optical Ethernet service offers reliable, ultra-fast Ethernet connectivity with speeds ranging from 10Mbps up to 10Gbps, in 10Mbps increments. Ethernet also offers the flexibility of point-to-point, point-to-multipoint or multipoint-to-multipoint configurations to support today's business technologies, including file transfers and video services.

■ **PEACE-OF-MIND RELIABILITY**

Charter Business Optical Ethernet is a reliable, dedicated fiber connection, with options to create redundant connectivity to enhance uptime. Plus, your settings are preserved over our network, so traffic from different users is securely separated and uniquely identified.

To maintain maximum uptime, technicians at the Charter Business Network Operations Center proactively monitor the network's performance around the clock. To provide quick response, all of Charter's technicians are U.S. based, located in communities across the country.

Charter Business Ethernet service is built for reliability and configured to meet quality-of-service benchmarks ratified by the Metro Ethernet Forum (MEF) industry group to provide carrier-class Ethernet performance.

■ **CONNECTIONS THAT GROW WITH YOUR BUSINESS**

Unlike traditional switched services that require you to upgrade from 1.5Mbps to 45Mbps with nothing in between, Charter Business Ethernet allows you to scale your bandwidth in 10Mbps increments. So you only pay for the bandwidth you need.

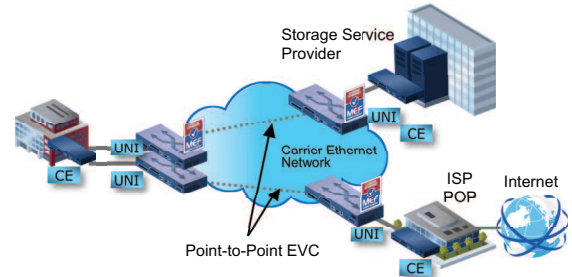
For details on features and options, please see reverse.

MULTIPLE SERVICE TYPES AVAILABLE

Charter Business Ethernet service offers generous bandwidth with three flexible configuration options, allowing you to build a tailor-made high-speed data network:

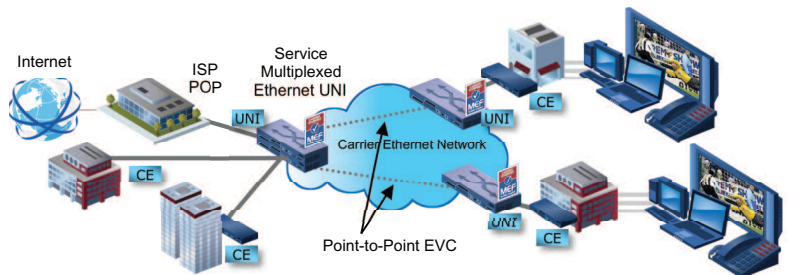
EPL

A point-to-point Ethernet Private Line (EPL) configuration offers a committed information rate connection. It also offers control, allowing you to configure the connection to carry data and voice traffic, as well as other IP applications to suit your needs. As such, it is ideal if you want full control of your network with the simplicity of a point-to-point connection.



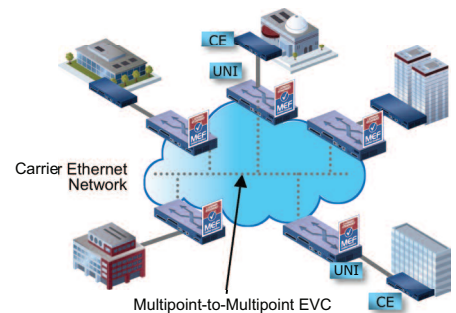
EVPL

If you need a point to multipoint connection to link a central headquarters or data center to multiple offices, your best bet is Ethernet Virtual Private Line service (EVPL). In addition to offering multipoint connectivity and hub and spoke configuration, EVPL doesn't require you to hire dedicated IT staff to manage it. Instead, Charter Business will handle the configuration and management of the connections based on quality-of-service guidelines you set.



E-LAN

The multipoint-to-multipoint Ethernet LAN (E-LAN) service offers the ultimate in flexibility, connecting all locations to create a secure, shared-data network. It can also mix in point-to-multipoint connections, allowing you to route traffic securely between any endpoints. For that reason, E-LAN may offer an enterprise the greatest degree of network flexibility.



Charter Business knows how important network reliability is, so we offer service attributes that address network performance levels and response thresholds. Please ask your account representative for full details.



Charter Communications® has obtained the Metro Ethernet Forum (MEF) certification. The MEF is a global industry alliance created to develop technical specifications and implementation agreements to promote interoperability and deployment of Carrier Ethernet worldwide.

For more information on Charter Business Optical Ethernet, call today.

888-861-3091 Charter-Business.com/OpticalEthernet

